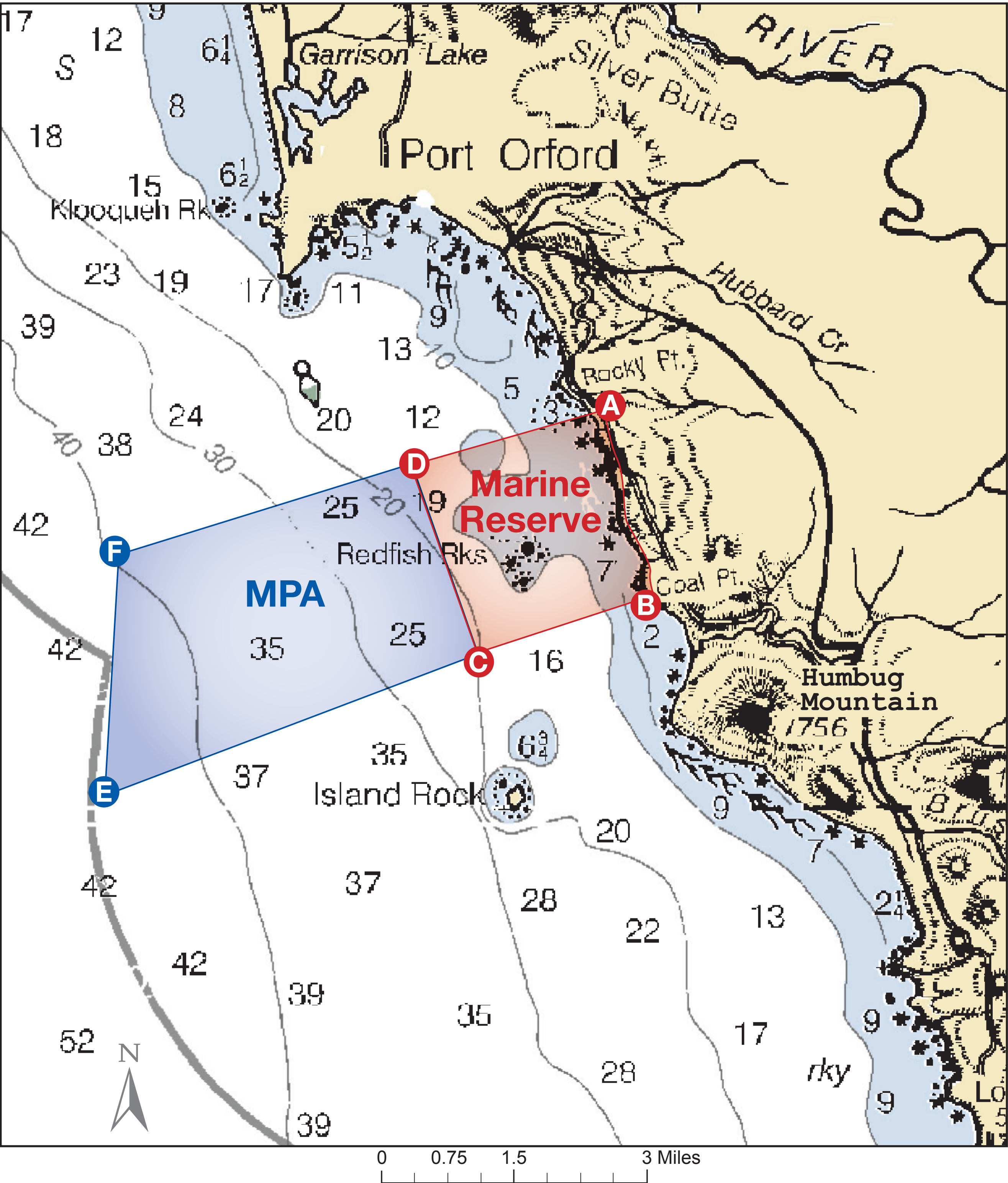


Harvest Restrictions

Redfish Rocks

Marine Reserve and Marine Protected Area (MPA)



Marine Reserve

NO

- Take of any fish, invertebrates, seaweeds or wildlife
- Deployment of any fishing gear

You Can

- Remove fishing gear that has drifted into the area (call Oregon State Police for permission)
- Transit with catch onboard

Marine Protected Area (MPA)

NO

- Take of any fish, invertebrates, seaweeds or wildlife except:

You Can

- Take crab
- Take salmon by troll

Shoreline Area

You Can

- Participate in all legal take, such as clamming, above the low tide line

Point	Latitude	Longitude
A	42°42.96'	-124°27.78'
B	42°41.52'	-124°27.18'
C	42°41.16'	-124°28.86'
D	42°42.54'	-124°29.64'
E	42°40.25'	-124°32.50'
F	42°41.90'	-124°32.50'

This summary does not replace the official regulatory language found in the Oregon Administrative Rules. Please consult the complete text of the regulations in OAR 635-012 (ODFW), OAR 141-142 (DSL) and OAR 736-029 (OPRD).
To report violations please call State Police dispatch 1-800-452-7888.
For any take not specified please consult the current fishing regulations or call ODFW 541-867-4741.

<https://oregonmarinereserves.com/rules/>

OREGON DEPARTMENT OF FISH AND WILDLIFE

