

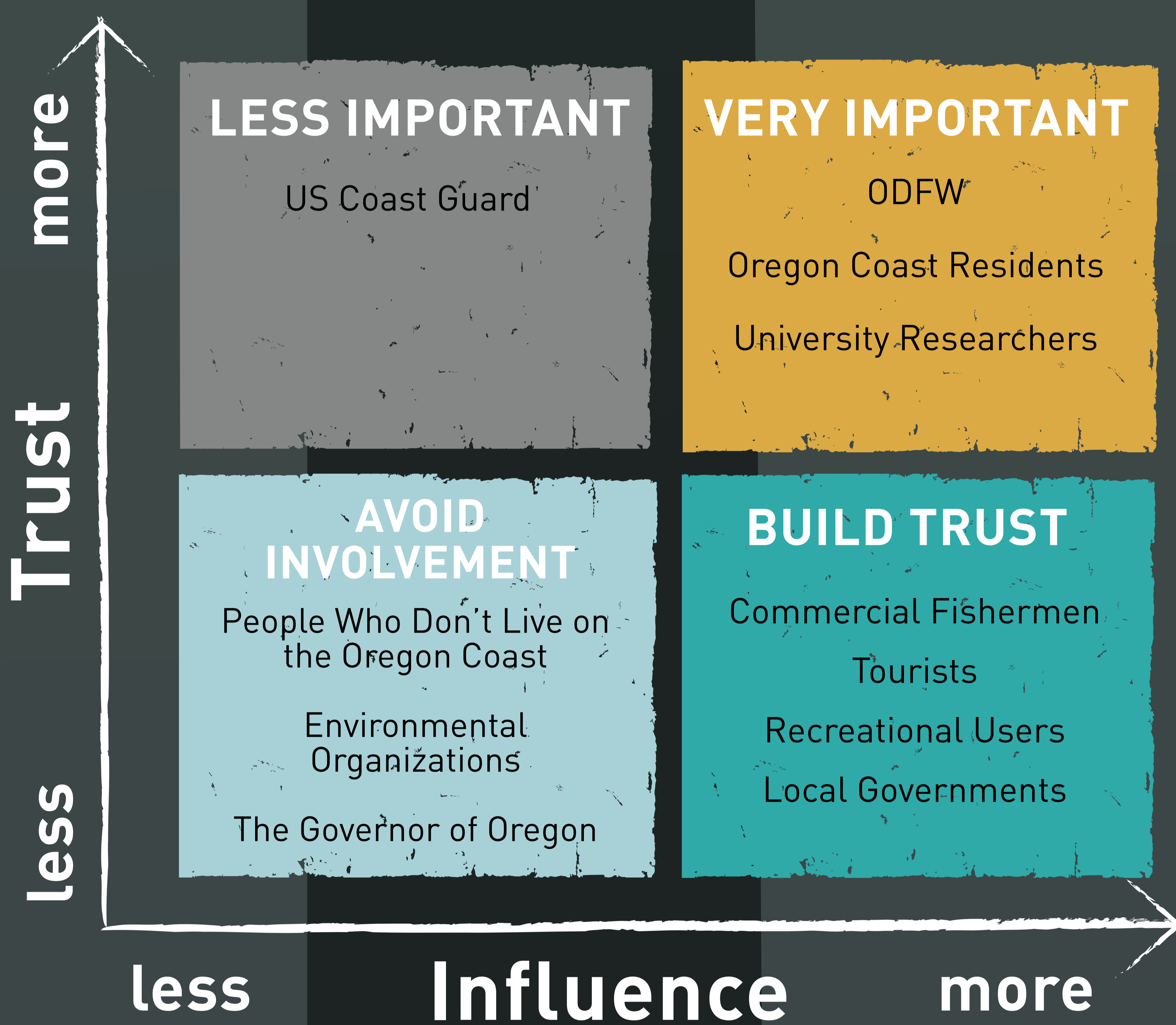


# HUMAN DIMENSIONS: BUILDING AND MAINTAINING RELATIONSHIPS

## WHO SHOULD HAVE THE MOST INFLUENCE IN MARINE MANAGEMENT?

### PRODUCTIVE RELATIONSHIPS

Successful natural resource management depends on maintaining productive relationships between humans and the places they live and work. But success also depends on productive relationships amongst humans themselves. Human dimensions research studies how relationships can remain productive even when there are disagreements about who should be involved in decision making.



### WHO SHOULD HAVE INFLUENCE ON OCEAN MANAGEMENT?

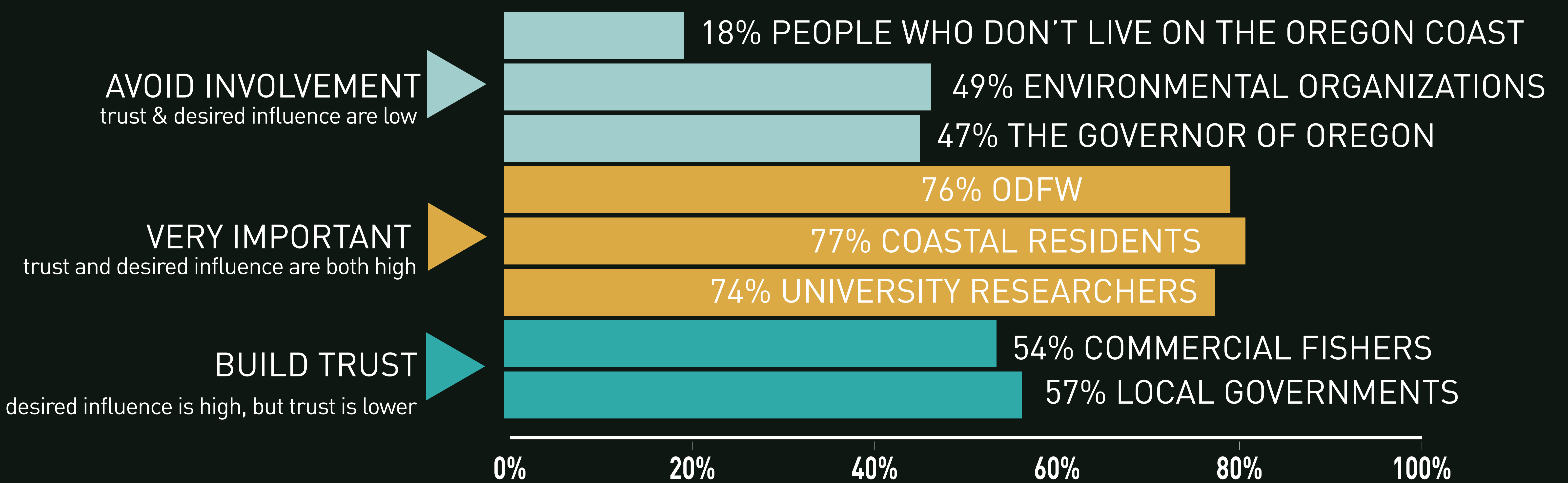
Coastal residents indicated how much **influence** 18 different individuals or organizations should have in contributing to management of ocean areas in Oregon.

### WHO IS TRUSTED TO MAKE DECISIONS?

Respondents then evaluated if they **trusted** each individual or organization to positively contribute to management of ocean areas in Oregon.

## TRUST IN MANAGEMENT OF OCEAN AREAS

% of coastal residents who trust each individual or organization to positively manage ocean areas in Oregon



### NEW INSIGHT

Examining these experiences of trust and distrust provides insights into where relationships need to be sustained, cultivated or repaired to facilitate productive management of ocean areas in Oregon.