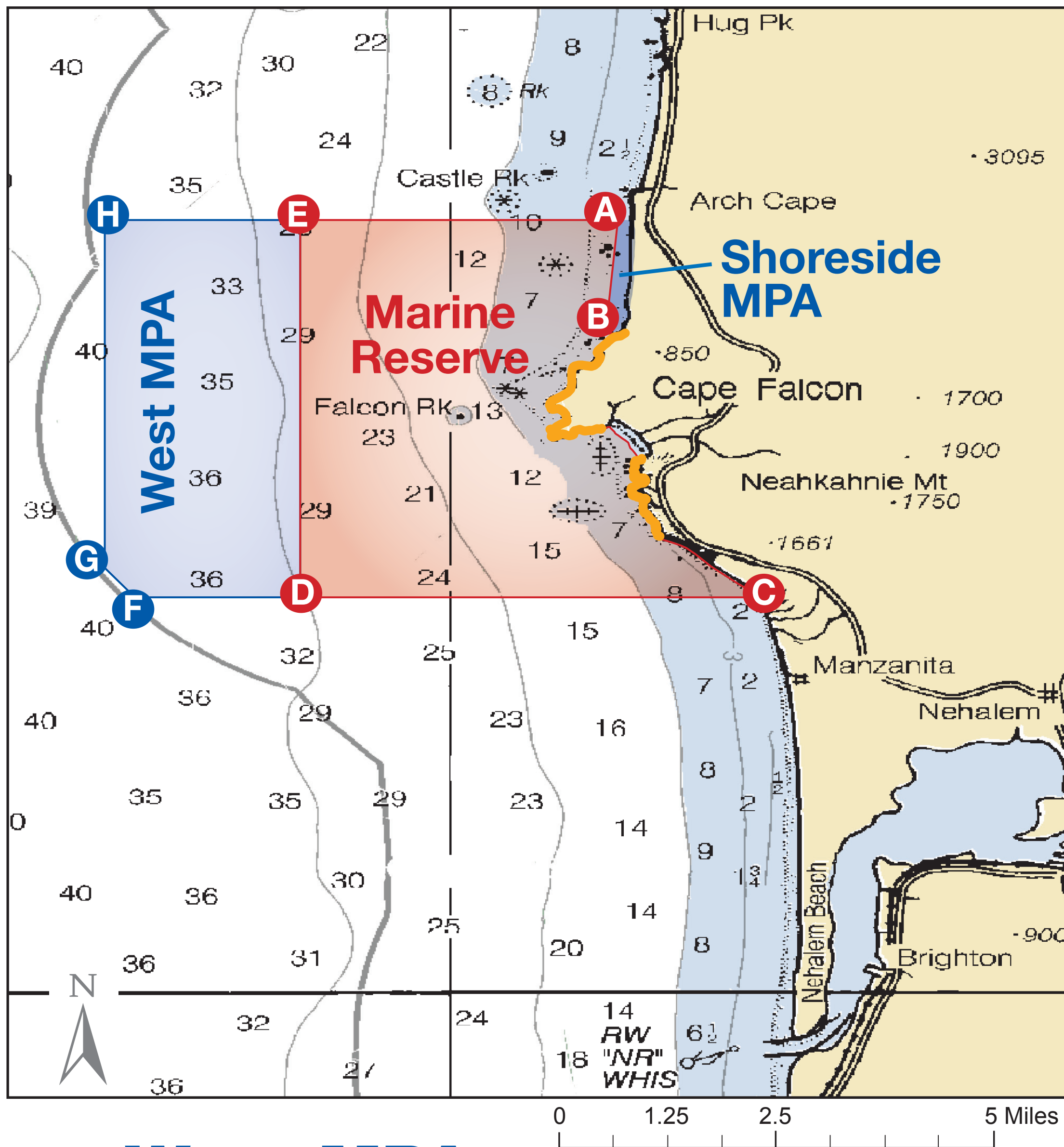


# Harvest Restrictions

## Cape Falcon

Effective Jan. 1, 2016

### Marine Reserve and Marine Protected Areas (MPA)



### West MPA

#### NO

- Take of any fish, invertebrates, seaweeds or wildlife except:

#### You Can

- Take crab
- Take salmon by troll

Point	Latitude	Longitude
A	45°48.00'	-123°58.10'
B	45°46.80'	-123°58.17'
C	45°44.00'	-123°56.77'
D	45°44.00'	-124°01.50'
E	45°48.00'	-124°01.50'
F	45°44.00'	-124°03.19'
G	45°44.31'	-124°03.50'
H	45°48.00'	-124°03.50'

### Marine Reserve

#### NO

- Take of any fish, invertebrates, seaweeds or wildlife
- Deployment of any fishing gear

#### You Can

- Remove fishing gear that has drifted into the area (call Oregon State Police for permission)
- Transit with catch onboard

### Shoreside MPA

#### NO

- Take of any fish, invertebrates, seaweeds or wildlife except:

#### You Can

- Recreationally use hook and line from the shore
- Participate in all legal take, not otherwise restricted, above the low tide line

### Shoreline Area

#### NO

- Take of fish, invertebrates, seaweeds or wildlife in areas marked orange

#### You Can

- Participate in all legal take in areas not marked orange, above the low tide line

This summary does not replace the official regulatory language found in the Oregon Administrative Rules. Please consult the complete text of the regulations in OAR 635-012 (ODFW), OAR 141-142 (DSL) and OAR 736-029 (OPRD).

**To report violations please call OSP dispatch 1-800-452-7888.**

For any take not specified please consult the current fishing regulations or call ODFW 541-867-4741.

[www.oregonocean.info/marinereserves](http://www.oregonocean.info/marinereserves)

OREGON DEPARTMENT OF FISH AND WILDLIFE

